

Bits & Pieces

Kathy Schmitz

One of the things on my lifetime to do list is to create an amazing crazy quilt. As the years slide by I realize this may not happen, so I decided to give myself a bit of a break and draw my crazy quilt!

As far as a theme goes there are a few things that thread together through the blocks: homes, birds, flowers, but for the most part I wanted to keep my mind open and doodle. I looked back through my "doodle" or sketch books, found bits and pieces from these pages and assembled them together to share with you on this "crazy quilt".



6033 11 Thread Red



6035 11 Thread Red



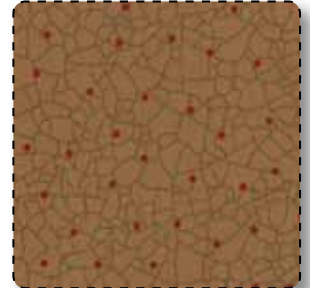
6032 11* Thread Red



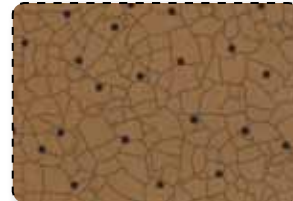
6035 14* Tan



6031 15 Tan Thread Red



6034 14 Tan Thread Red



6034 17 Tan Black Cat



6034 11* Thread Red



6030 11* Thread Red- closeup of panel section and border



6031 11 Cat Thread Red



6033 14 Tan



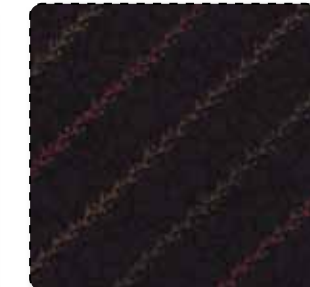
6031 14* Tan Black Cat



6032 15* Black



6035 15* Black Cat



6033 15* Black Cat



6030 12 Leaf Green



CHD 1130 or CHD 1130G
The Bells are Ringing Size: 50" x 66"



CHD 1129 or CHD 1129G
Cabin Cozy Size: 61" x 79"



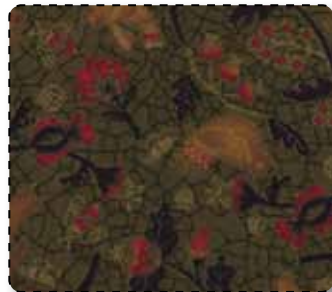
6032 14 Tan



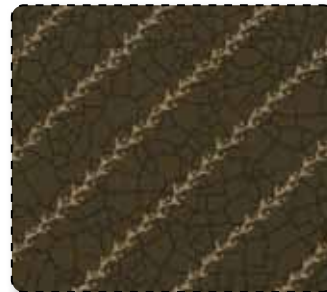
6031 16* Tan Leaf Green



6035 12* Leaf Green



6032 12 Leaf Green



6033 12 Leaf Green



6034 12* Leaf Green

Delivery: May, 2012

Asst. 6030-15 – 15 Yards of Each
Asst. 6030-12 – 12 Yards of Each
Asst. 6030-10 – 10 Yards of Each
Asst. 6030-10H – 10 Yards of 11 Skus

6030AB – Bundle: 22 Skus -18" x22"
6030JR – Jellyroll (40) 2 1/2" x45" Strips - PK 4
6030LC – Layer Cake (42) 10" x10" Squares - PK 4
6030PP – (42) 5" x5" Squares - PK 12
JR's, LC's & PP's do not include Panels.
JR's, LC's & PP's include two of each sku.

Skus: 22 Prints 44" -45" 100% Cotton

moda Classic



CHD 1131 or CHD 1131G
Celebrate Size: 50" x 66"

Bits & Pieces
kathyschmitz.com
kathyschmitzstudio.blogspot.com