

MORRIS MANOR FROM BARBARA BRACKMAN is Moda's latest update of William Morris's classic design. The collection is named for the family's summer home Kelmscott Manor, a riverside house they began renting annually in the 1870s. Morris thought Kelmscott Manor "heaven on earth," a spot he captured in colors echoing the seasonal view. At the Morris Manor they boated, their girls grew up and Morris tended his gardens that provided inspiration for the floral prints.

We've recolored a few of our favorites from early Morris lines in river-inspired shades of blue and green. Print collectors will be glad to know we've added some not reproduced earlier, such as the leafy Branch and the Scroll floral. These prints will inspire your Arts & Crafts decorating and patchwork projects.

MARCH DELIVERY

MORRIS MANOR

BEST OF MORRIS

Barbara Brackman



MORRIS MANOR BEST OF MORRIS *Barbara Brackman*



8393 11*



8397 12*



8391 11*



8396 11



8392 11



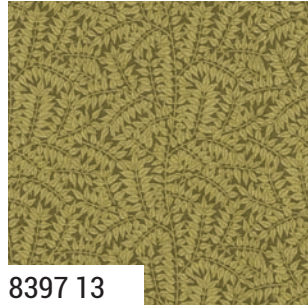
8395 11*



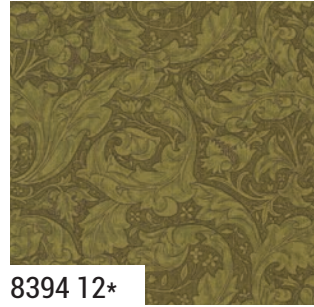
8390 11*



8391 12*



8397 13



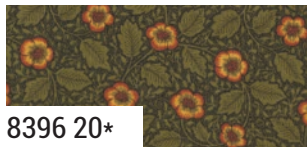
8394 12*



8391 15*



8397 17



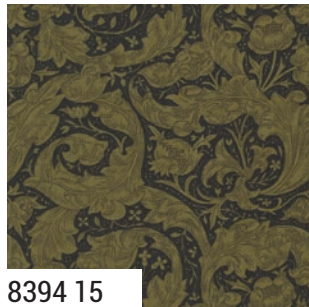
8396 20*



8392 15*



8393 15



8394 15



8395 17*



8397 18



8390 14*

moda MARCH DELIVERY

MORRIS MANOR BEST OF MORRIS *Barbara Brackman*



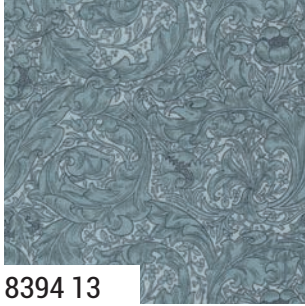
8392 13*



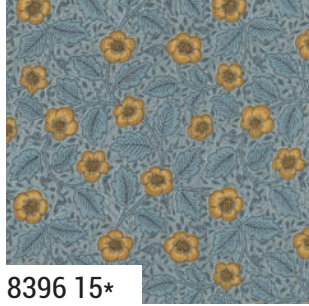
8397 14



8395 15



8394 13



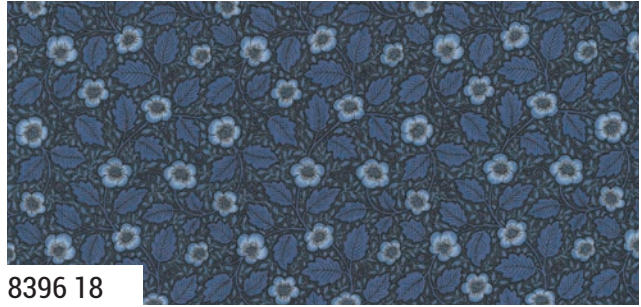
8396 15*



8391 13*



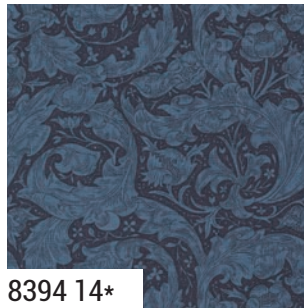
8393 13*



8396 18



8390 15*



8394 14*



8397 16



8391 14*



8393 14*



8392 14

8390

Asst.
15

Asst.
10

Low Cal
10

AB

JR

LC

MC

PP

MARCH DELIVERY

•33 Prints •100% Premium Cotton

AB includes all 33 skus. JRs, LCs, MCs & PPs include 33 skus with two each of 8390, 8397-12, 14, 16 & 18.





MM 023 Early Hours 72" x 72" FQ Friendly
by Modernly Morgan



HQ 140 Andromeda 93" x 93" FQ Friendly
by Happy Quilting



MM 016 Hodgepodge 60" x 72" FQ Friendly
by Modernly Morgan