

HARVEST ROAD

My heart has always belonged to the mountains. There is serenity in a mountainside color palette... smoky shades of sage and sky mixed with the warmth of firewood. Even the flowers are restful, rustic, with a hint of sophistication. This collection is a memento of bygone bonfires, wooded hikes, and cozy plaid blankets.



I'm so glad i live in a world where there are Octobers. -L.M. Montgomery

Lella Boutique



LB 182 / LB 182G
NEW LEAF NAVY - 70" x 70" - LC Friendly



LB 182 / LB 182G
NEW LEAF CREAM - 70" x 70" - LC Friendly



Harvest Floral - 5100 12



Floating Acorn - 5101 12



Modern Dot - 5103 12



Bonfire - 5104 11



Mountainside - 5105 11

EGGSHELL



Harvest Floral - 5100 13



Floating Acorn - 5101 13



Modern Dot - 5103 13



Bonfire - 5104 13



Mountainside - 5105 13

CHESTNUT

LB 184 / LB 184G
RUGBY - 64" x 72" - HB Friendly



LB 183 / LB 183G
SUN TEA - 78" x 78"



DESIGNER TRIVIA



VANESSA GOERTZEN

First collection – Into the Woods in 2013

Favorite Quilt Market memory – I will always cherish my first Market as a designer for Moda - it was Spring Market 2014 in Pittsburgh. I was a bit nervous being a newbie but I was lucky to be next to BasicGrey. That's where I met Allison Black. She was so friendly and funny, and she had me giggling all through Market.

Favorite pre-cut – The Charm pack. There are so many things you can do with those yummy 5" squares.

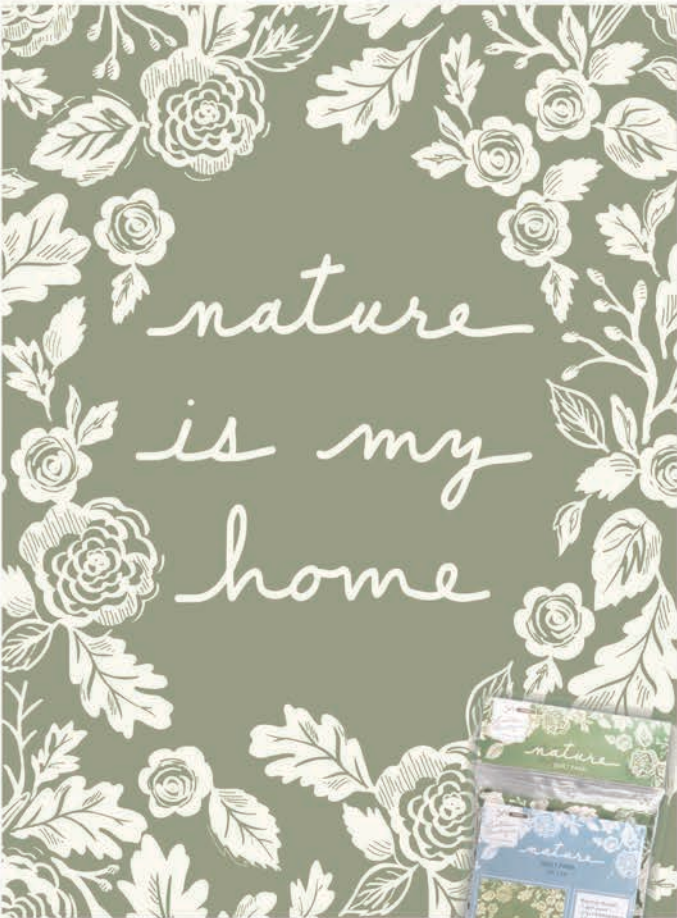
Years sewing and quilting – Since I was 14. That makes 20 years!

Who taught you to sew – My mom. She gave me the basics of piecing and let me run with my ideas. If she'd made me pick out my mistakes, I don't think I would have stuck with it.

First Fabric Collection
**INTO THE
WOODS**

lellaboutique.bigcartel.com

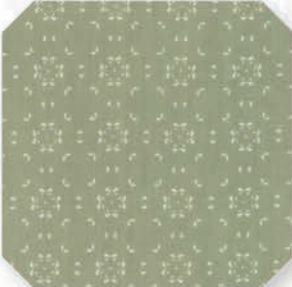




5100 11P - Panel Measures 57" x 77"
packaged in polybag with header



Harvest Floral - 5100 14



Bonfire - 5104 14



Modern Dot - 5103 24



Forever Plaid - 5102 14



Mountainside - 5105 14



Modern Dot - 5103 14



LB 142 / LB 142G
COTTAGE BLOSSOMS - 77" x 81"

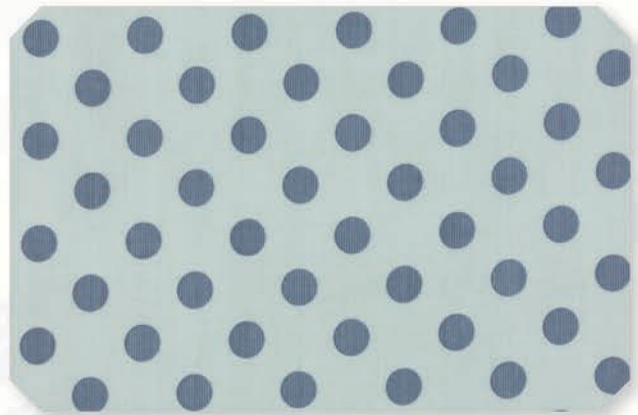
SAGE



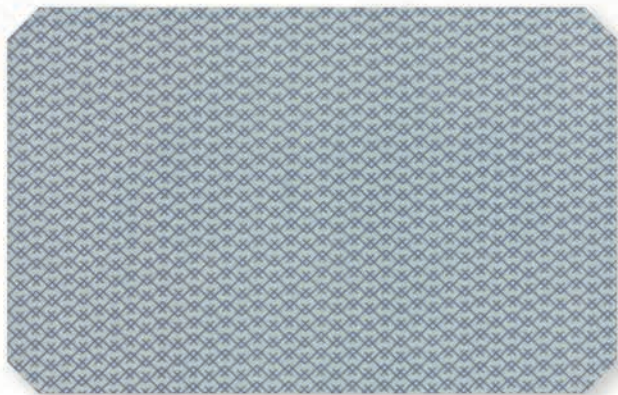
SMOKEY BLUE



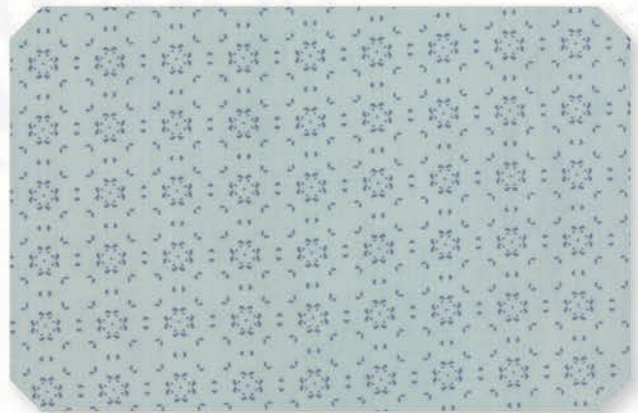
Harvest Floral - 5100 15



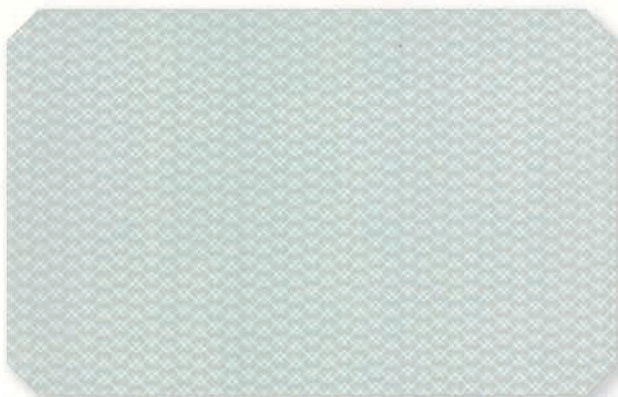
Modern Dot - 5103 15



Mountainside - 5105 15



Bonfire - 5104 15



Mountainside - 5105 25



Forever Plaid - 5102 15



Harvest Floral - 5100 16



Mountainside - 5105 16



Modern Dot - 5103 16



Forever Plaid - 5102 15



Floating Acorn - 5101 16



Bonfire - 5104 16



Harvest Floral - 5100 26

INDIGO

5100

Asst.
15

Asst.
8

AB

F8

HB

JR

LC

MC

PP

OCTOBER DELIVERY

• 29 Prints • 1 Packaged Panel • 100% Premium Cotton
Asst. and Precuts do not include packaged panel. HB's, JR's, LC's, MC's and PP's include two each of 5100 and 5105-11, 13, 14, 15 & 16.