

★ OFFICIAL ★
RUBY STAR
SOCIETY
PATTERN CO.

CANDLELIGHT TREE SKIRT

project sheet



FABRIC BY ALEXIA MARCELLE ABEGG & MELODY MILLER

PS RS5033-3

CUTTING INSTRUCTIONS

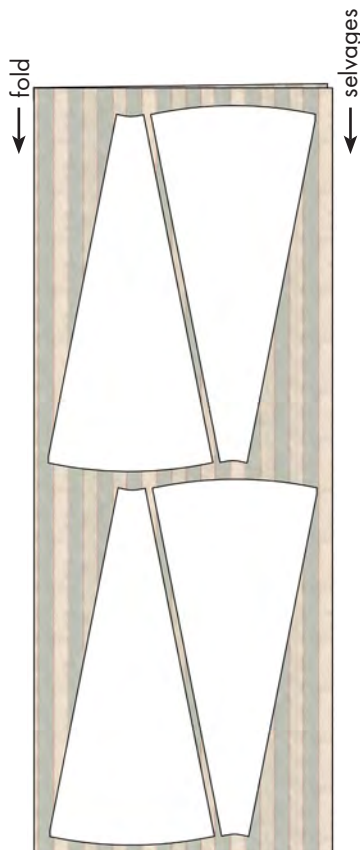
Trim the edges off templates indicated with scissors along line.

Tape pages together as shown at right, overlapping edges and aligning circles and square. Cut out template.



ONE-FABRIC SKIRT

Fold fabric with selvages together. Cut **(16)** total Panels, fitting two pattern pieces nested as shown across the width of folded fabric, cutting through both fabric layers. Grainline on pattern piece should be parallel to selvage/fold. (Diagram is for template placement reference only - not all 16 pieces are shown to save space.)



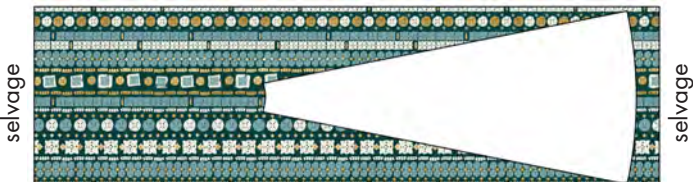
ETC

TWO-FABRIC SKIRT

Follow instructions for One-Fabric Skirt above, except cut **(8)** Panel pieces from each of your fabrics.

SCRAPPY SKIRT

From each $\frac{1}{3}$ yard, cut **(1)** Panel for a total of **(16)** panels. Grainline should be perpendicular to selvage.

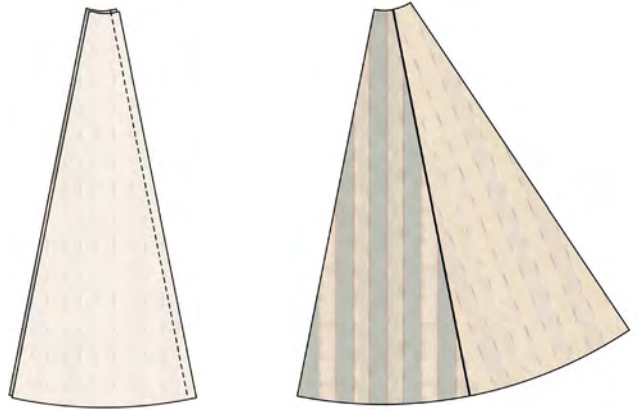


SEWING INSTRUCTIONS (ALL VIEWS)

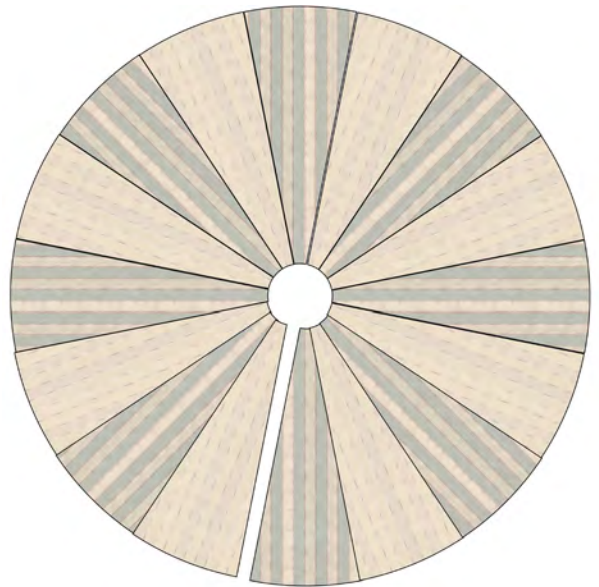
seam allowance $\frac{1}{2}$ " unless otherwise noted

If making Scrappy Skirt, lay all your panels out in a circle first to determine print placement.

Place first two panels right sides together. Stitch together along one edge and press seam open.



Continue attaching panels and pressing seams open until you have used all **(16)** Panel pieces. If making Two-Fabric skirt, be sure you alternate fabrics. Do not connect final seam to make a closed circle, leave it open as shown.



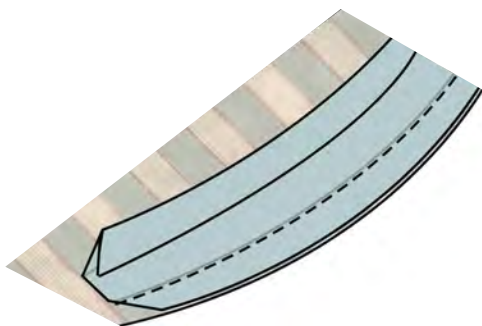
Cut backing yardage in half and stitch together pieces along selvage edges with $\frac{1}{2}$ " seam allowance; press open. Trim backing to approximately 62" square. Layer backing, batting and skirt to make a quilt sandwich. Smooth skirt so that open straight edges are touching but not overlapping. Baste, quilt and bind as desired. Trim backing and batting to be even with skirt.

Tip: skip the batting and try using a plush fabric like Moda Snuggles as the backing for a fluffy wintery texture!

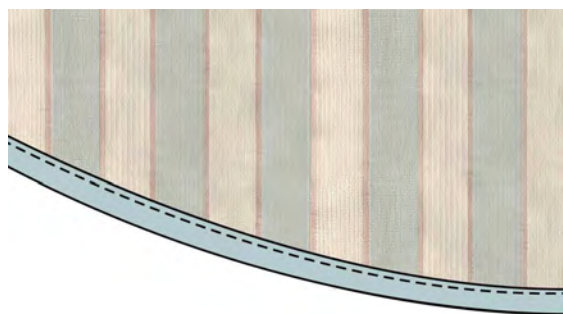
If necessary, piece bias tape together so you have a length at least 180" long. To piece, open bias tape flat and sew ends right sides together diagonally as shown below, trim seam allowance and press seam allowance open. Refold bias tape.



On outer curved edge, starting at opening in circle, unfold one side of bias tape and align raw edge with raw edge of skirt. Stitch bias tape to skirt all the way around curved edge, stitching in first fold of bias tape.

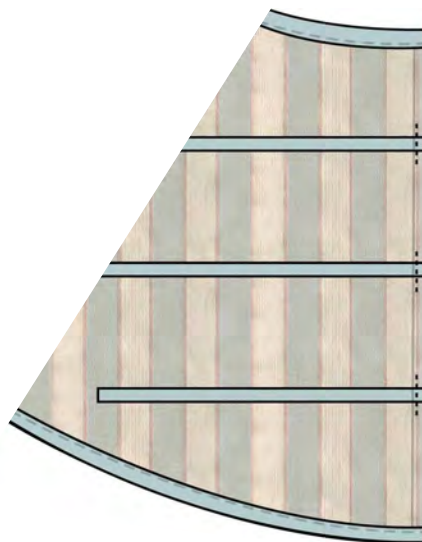


Refold bias tape around raw edge of skirt. From front, topstitch $\frac{1}{8}$ " from upper edge of bias tape to catch fold on back. Trim bias tape even with both ends of skirt.



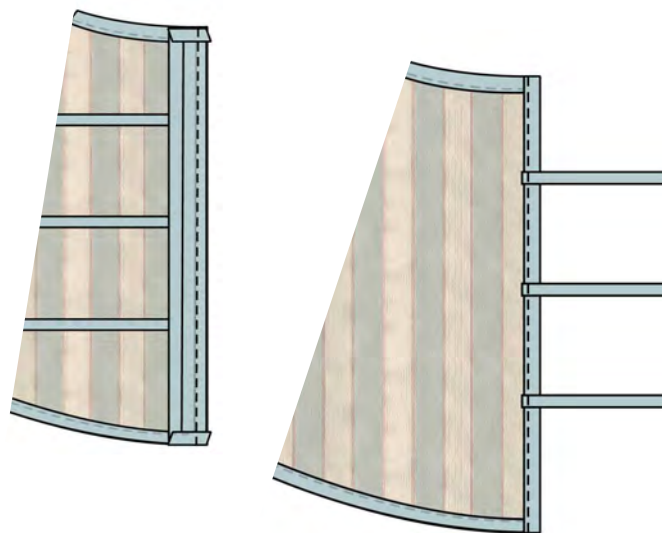
Repeat with a 20" length of bias tape to bind inner curved edge of skirt.

Cut (6) 18" lengths of bias tape. Stitch fold closed to create ties. On each unbound straight edge of skirt, mark 6", 12" and 18" down from top edge. On right side, center tie over each mark with raw edges of skirt and tie aligned. Stitch over each tie at $\frac{1}{4}$ " to secure.



Cut (2) lengths of bias tape 1" longer than unbound straight edges of skirt. Open each short end and fold $\frac{1}{2}$ " to wrong side; press. Attach bias tape to each straight edge in same manner as curved edge, keeping ends folded. Ties will be sandwiched between bias tape and skirt.

Fold bias tape around to back and bring ties across it so they are pointing in the other direction. Topstitch $\frac{1}{8}$ " from inside folded edge of bias tape, stitching over ties as well.



Tie around base of tree and wait for Santa!

CANDLELIGHT TREE SKIRT

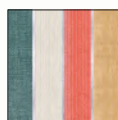
Make a one-color, two-color or scrappy Candlelight Tree Skirt to get your tree Santa-ready! All fabrics shown are from Candlelight and Candlelight Wovens by Alexia Marcelle Abegg & Melody Miller.

Tree skirts measure 54" in diameter with a 6" opening in the center.



FABRIC REQUIREMENTS

ONE-FABRIC TREE SKIRT (2-directional or non-directional fabric recommended)



RS4011-14

3 yd

TWO-FABRIC TREE SKIRT (2-directional or non-directional fabric recommended)



RS4011-13

1 ½ yd



RS4011-16

1 ½ yd

SCRAPPY TREE SKIRT - ⅓ yd of 16 different fabrics

ADDITIONALLY FOR ALL VIEWS:

Skirt Backing - 3 ½ yds

Batting - at least 60" square

½" Double Fold Bias Tape: 10 ½ yds

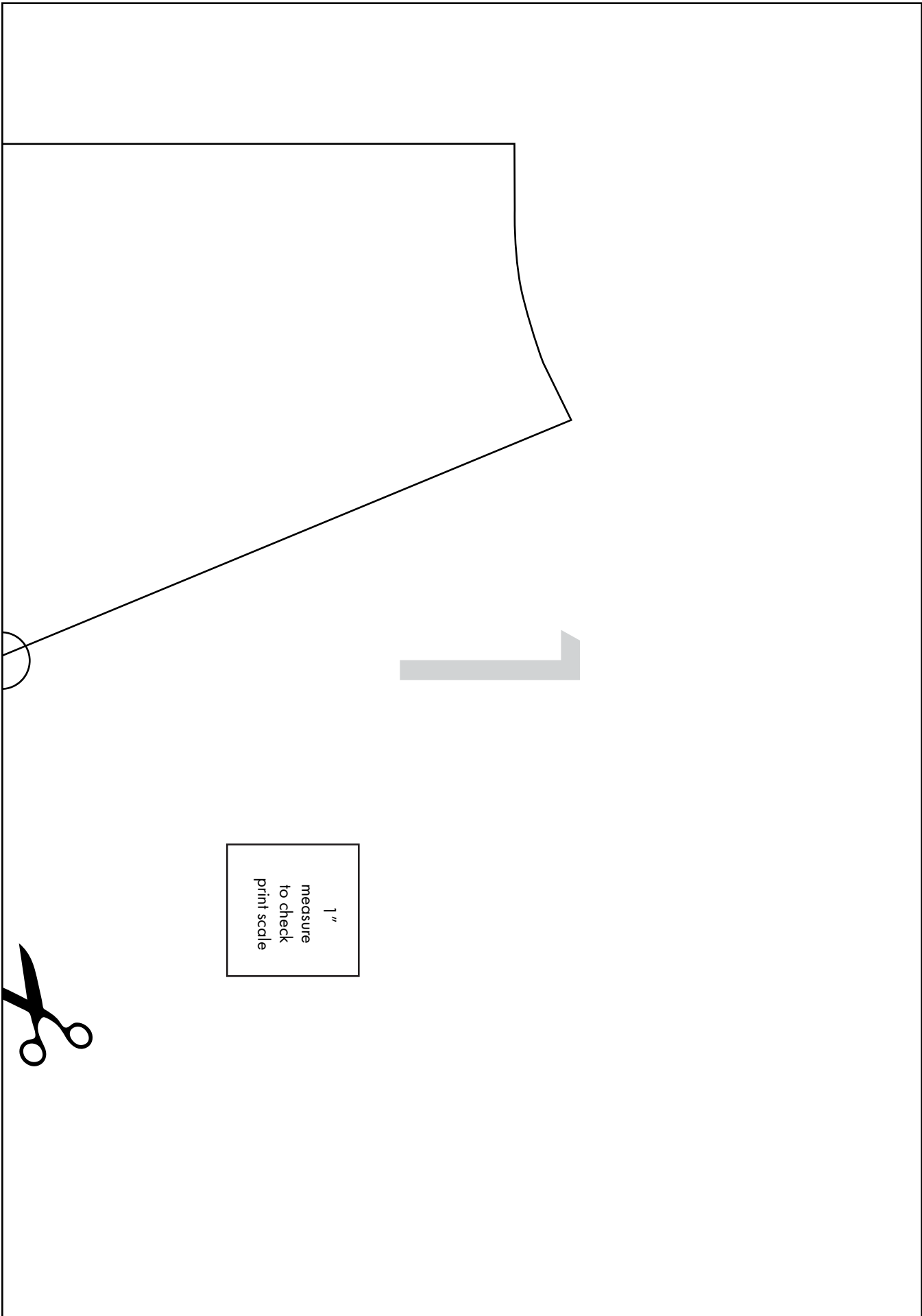
★ RUBY STAR
SOCIETY ★

moda
FABRICS + SUPPLIES

PS RS5033-3



Copyright 2020 Ruby Star Society. Copying or otherwise redistributing is strictly prohibited. For personal use only.

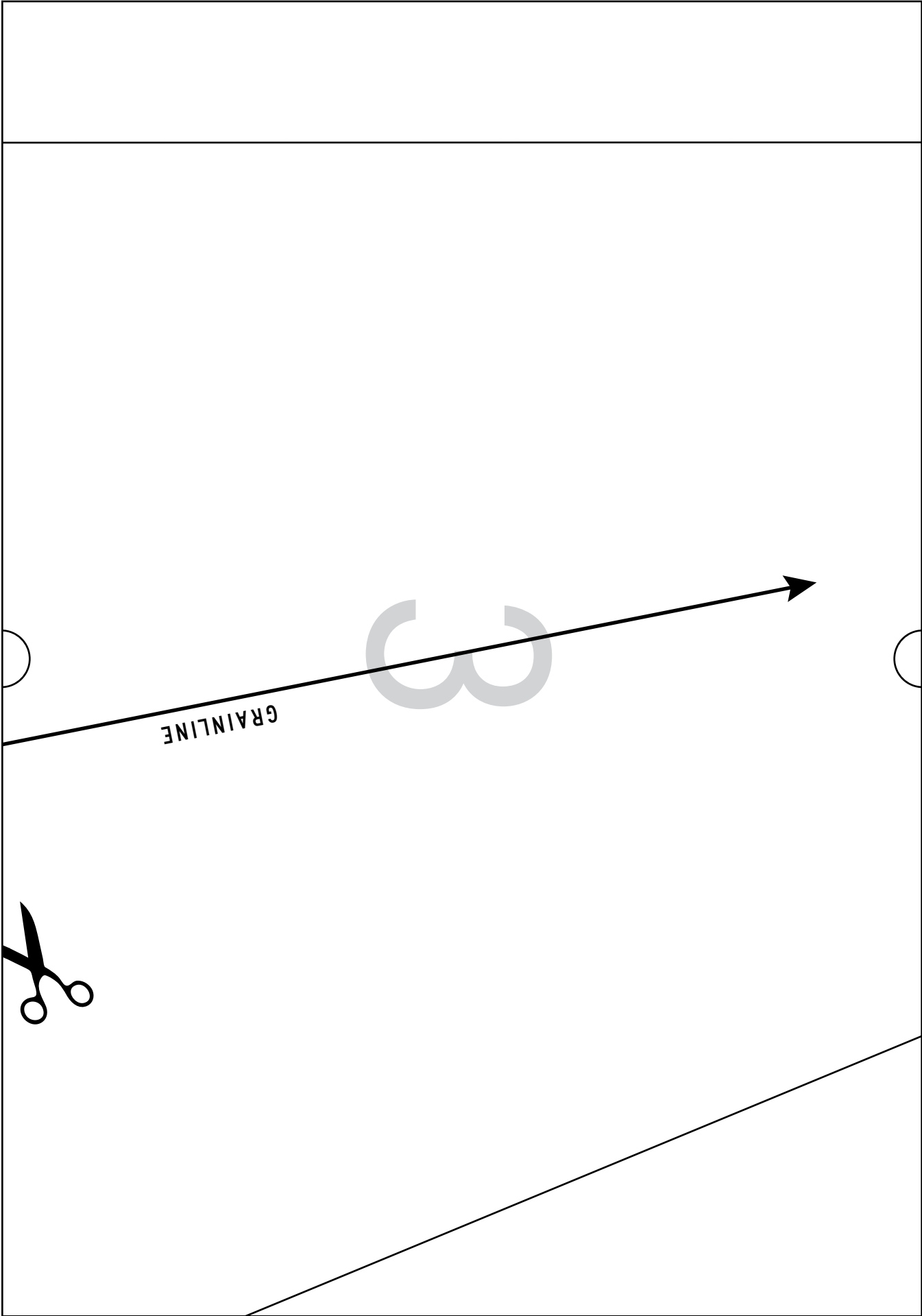


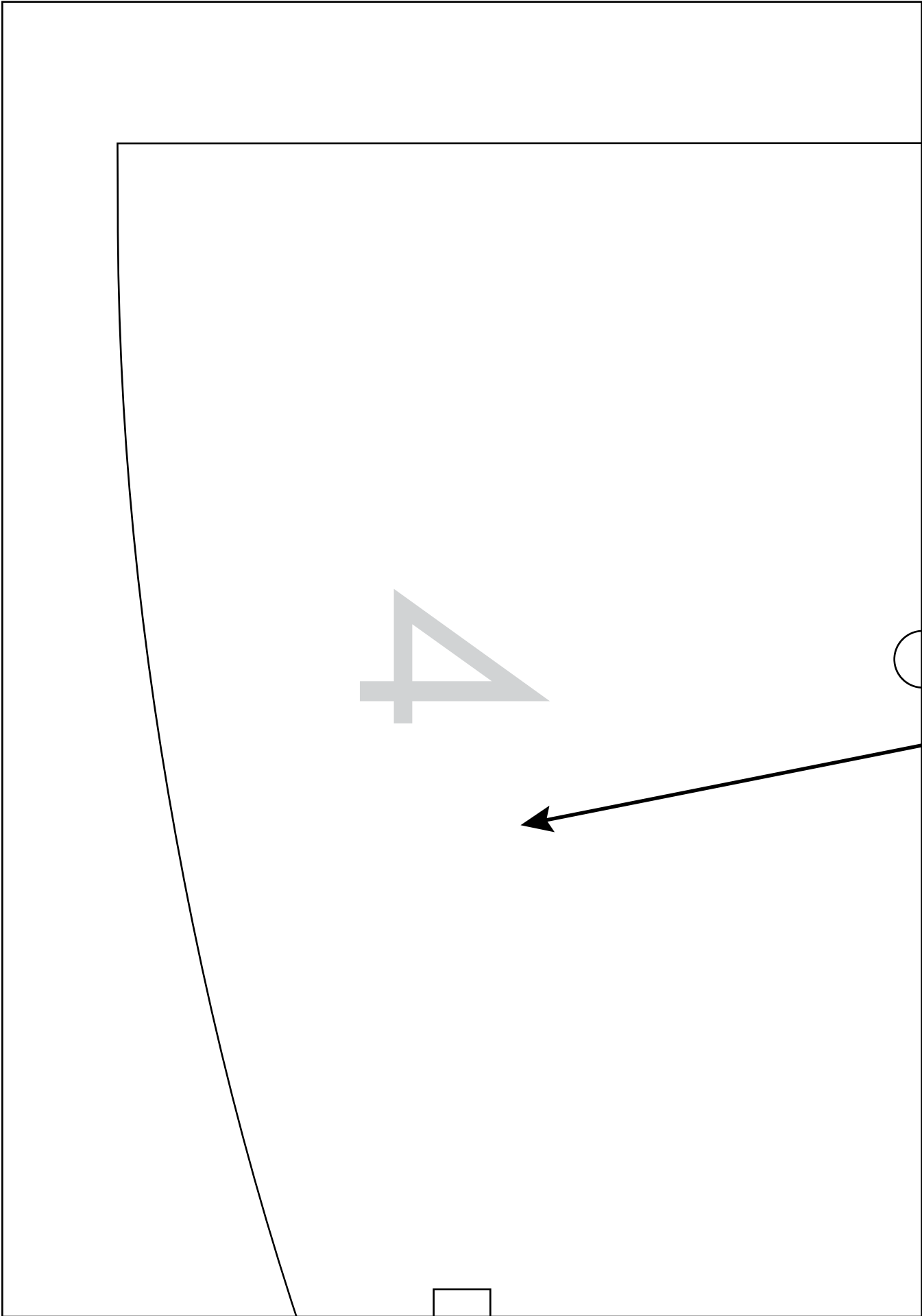
1"
measure
to check
print scale



★
RUBY STAR
SOCIETY
★
CANDLELIGHT TREE SKIRT
PANEL
Cut (16)







1"
measure
to check
print scale

5

